

REFRIGERATION CASSETTE COMMERCIAL RANGE

Bars / Hotels / Restaurants
Corner shops - Mini-markets
Hard Discount - Supermarkets - Hypermarkets
Central kitchens



1.5 > 9 kW

KRS / KRS-W

- KRS direct expansion and glycol water (KRS-W) refrigeration cassettes are compliant with workplace requirements: noise level, hygiene, ventilation and aesthetic quality.
- Vibration damper pads placed under the motor help reduce the noise level.
- Drip tray under the coil and condensate discharge pump.
- 6 motor speeds with 3 pre-wired as standard enabling precise setting of the air flow-rate.
- 4 adjustable deflectors guarantee smooth air distribution in all directions.
- Unit body totally encased in the false ceiling.

DESCRIPTION

Casing

- The casing of the KRS range is made of double-insulated galvanized sheet steel: inside with a polyurethane shell and on the outside with a thick, closed cell, foam insulating layer.
- Equipped with a drip tray under the coil.

Diffuser

- Its high aesthetic quality is perfectly adapted to all environments.
- Made of smooth ABS, white colour, it has an interior insulation lining to eliminate the risk of condensation.
- A manually adjustable deflector system enables distribution of air in four directions.

Ventilation

- The KRS range is equipped with 6-speed centrifugal fans with high static pressure and air flow efficiency.
- 3 speeds are factory pre-wired on each model. It is possible to select 3 other intermediate speeds depending on noise level requirements (refer to the table opposite).
- The motors are of the type, single-phase, 230V, 50Hz- Hz, class B with internal thermal overload protection.
- The fan blades are specially designed for this range and provide a high air flow-rate while guaranteeing a low noise level.

Coil

- The high-performance and compact finned coils are composed of aluminium fins crimped onto copper tubes:

Aluminium fins	KRS	KRS-W
Spacing	2,81 mm	2,1 mm (KRS-W1) 1,81 mm (KRS-W2)
Epoxy protection	yes	no
Grooved copper tubes	yes	no

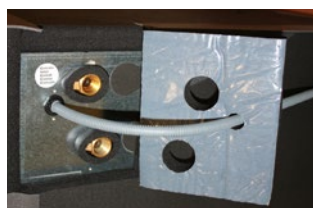
Condensate discharge pump

- The maximum discharge height is 650 mm in relation to the pump height.

ADVANTAGES

Installation

The KRS cassettes are delivered with a condensate discharge pump with float switching device.



The pre-cut insulation foam is easy to fit and guarantees total isolation of the casing once all tubes have been connected.

Servicing / Maintenance

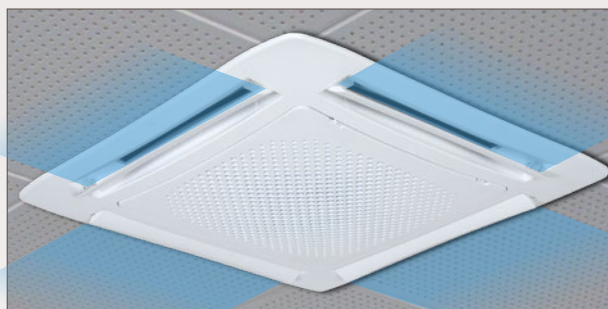
The casing is designed to offer complete access to all components rendering maintenance tasks easier (photo n° 1).

The washable filter clipped onto the diffuser is easily accessible and has a stand-by position for cleaning (photo n° 3).

DESIGNATION

KRS-W⁽¹⁾ 1⁽²⁾ 1⁽³⁾

- (1) Silent refrigeration cassette
- (2) **KRS** = direct expansion
KRS-W = glycol water
- (3) **KRS 1** = casing 600 x 600 mm
KRS 2 = casing 800 x 800 mm



KRS 1 refrigeration cassette encased in the false ceiling.

1.



2.



3.



4.



CERTIFICATIONS



KRS / KRS-W

			Motor speeds*						Motor speeds*					
			V1	-	-	V2	-	V3	V1	-	-	V2	-	V3
			ST	NC	NC	ST	NC	ST	ST	NC	NC	ST	NC	ST
r.p.m.			400	540	600	700	820	1120	280	360	470	560	670	750
Capacity (1)	DX - Q0m - HR = 85 %		KRS 1 *						KRS 2 *					
R404A	DT1 = 10K - tA1 = 8°C	kW	1,50	2,00	2,10	2,40	2,70	3,30	3,30	4,00	4,90	5,50	6,10	6,60
R134a	DTM = 10K - tA1 = 8°C	kW	1,37	1,82	1,91	2,18	2,46	3,00	3,00	3,64	4,46	5,01	5,55	6,01
R449A	DTM = 10K - tA1 = 8°C	kW	1,32	1,76	1,84	2,11	2,37	2,90	2,90	3,51	4,30	4,83	5,36	5,80
R452A	DTM = 10K - tA1 = 8°C	kW	1,80	1,71	1,80	2,06	2,31	2,83	2,83	3,43	4,20	4,71	5,22	5,65
R404A	DT1 = 12K - tA1 = 12°C	kW	2,10	2,60	2,80	3,20	3,50	4,30	4,30	5,20	6,40	7,20	8,10	8,70
R134a	DTM = 12K - tA1 = 12°C	kW	1,95	2,42	2,60	2,98	3,26	4,00	4,00	4,84	5,95	6,70	7,53	8,09
R449A	DTM = 12K - tA1 = 12°C	kW	1,91	2,36	2,55	2,91	3,18	3,91	3,91	4,73	5,82	6,55	7,37	7,91
R452A	DTM = 12K - tA1 = 12°C	kW	1,84	2,27	2,45	2,80	3,06	3,76	3,76	4,55	5,59	6,29	7,08	7,61
Air flow		m ³ /h	300	409	453	530	620	850	700	900	1200	1400	1680	1880
Connections	inlet	Ø OD	3/8"	3/8"	3/8"	3/8"	3/8"	3/8"	3/8"	3/8"	3/8"	3/8"	3/8"	3/8"
	outlet	Ø OD	1/2"	1/2"	1/2"	1/2"	1/2"	1/2"	1/2"	1/2"	1/2"	1/2"	1/2"	1/2"
Capacity (2)	Glycol water		KRS-W 1 *						KRS-W 2 *					
W* (2)	DT1 = 10K - tA1 = 12°C	kW	1,6	1,9	2,1	2,3	2,5	2,8	3,3	3,9	4,5	4,8	5,1	5,2
Air flow		m ³ /h	320	430	500	610	710	880	710	970	1280	1500	1675	1820
Connections	inlet	Ø OD	1/2"	1/2"	1/2"	1/2"	1/2"	1/2"	3/4"	3/4"	3/4"	3/4"	3/4"	3/4"
	outlet	Ø OD	1/2"	1/2"	1/2"	1/2"	1/2"	1/2"	3/4"	3/4"	3/4"	3/4"	3/4"	3/4"
Circuit volume			KRS 1 / KRS-W 1 *						KRS 2 / KRS-W 2 *					
		dm ³	2	2	2	2	2	2	4	4	4	4	4	4
Acoustic	Lp (3)	dB(A)	26	33	35	38	42	49	25	31	37	41	44	47
	Lw(A)	dB(A)	40	47	49	52	56	63	39	45	51	55	58	61
Net weight	casing + diffuser	kg	28	28	28	28	28	28	46	46	46	46	46	46

* ST = Motor speeds pre-wired as standard

NC = Intermediate motor speeds not wired (for selection of a non-wired speed, an installation technician must make the corresponding connections > refer to installation instructions).

KRS 1 / KRS-W 1 = 1 fan 230V/1/50 Hz - 100 W max - 0,45 A max

KRS 2 / KRS-W 2 = 1 fan 230V/1/50 Hz - 170 W max - 0,74 A max

(1) The evaporation temperature must not be less than -3°C.

(2) Glycol water operating conditions (glycol ethylene 30%) = 0/+4°C.

(3) Sound pressure level in dB(A) measured at 2 m, hemispherical measurement surface, line of sight, on a reflective surface, given as an indication only.

